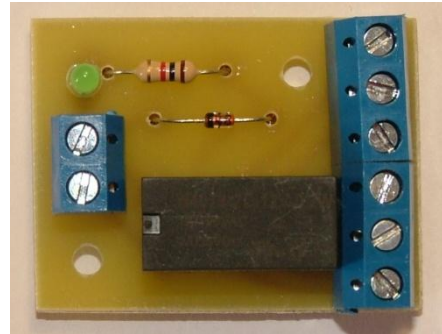


Control Relay Unit

INFORMATION SHEET ref: CTT05a

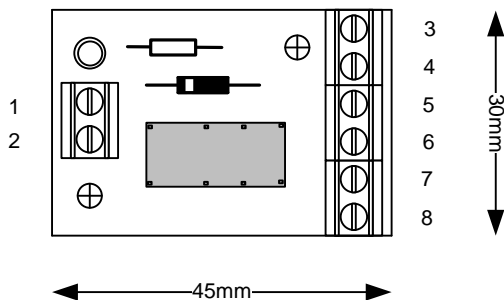
Description

This device is a small control relay mounted onto a Printed Circuit Board with pressure pad terminals for ease of connecting small wires. LED lights up when relay is energised. No soldering required and no mounting problems. Two 3.5 mm holes provided for 3 mm screws.

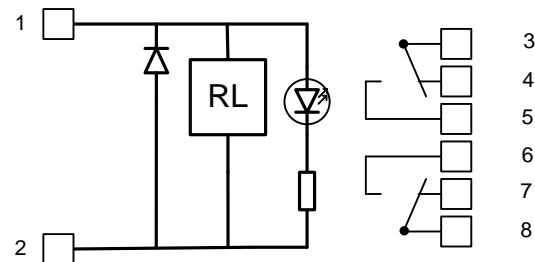


Application

The relay has 2 change over contacts electrically isolated from each other, allowing them to be used in different circuits and for different applications, such as signal controls, frog switching, computer interfacing and any application that needs some form of signal switching or interlocking. On my layout they are used for control of frog polarities and signal interlocking.



Physical layout of relay board



Circuit diagram of relay board

Ratings

- The relay coil is rated for 12Volt dc energisation drawing approx 12 mA.
- The relay contacts are rated 2 amps at 30 Vdc, ample for most control applications. If track power is to be switched a relay with a higher current rating is recommended.

Connections

Terminal No 1	Supply, 12 Volt DC Positive
Terminal No 2	Supply, 0 Volt DC common
Terminal No 3	Pole A Common
Terminal No 4	Pole A normally closed
Terminal No 5	Pole A normally open
Terminal No 6	Pole B normally open
Terminal No 7	Pole B normally closed
Terminal No 8	Pole B Common

For Further information or advice contact Colin Tanner-Tremaine on

082 828 0665 or cttremaine@mweb.co.za